



8075 Aspen Tower 50 Marsh Wall, London, E22 2AH

£3,750 Per month



£865pw / Available July / Furnished

New two-bedroom apartment situated on a high floor located in Aspen Tower on Marsh Wall. The property comprises a spacious reception with floor to ceiling windows framing spectacular sunset views.

Furthermore, the property enjoys an open-plan setting with modern integrated kitchen (designed with the highest specifications in mind), 2 double bedrooms, two luxury bathrooms (1 en-suite) and great storage.

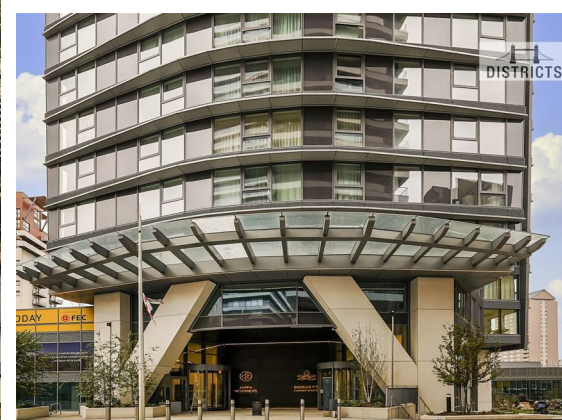
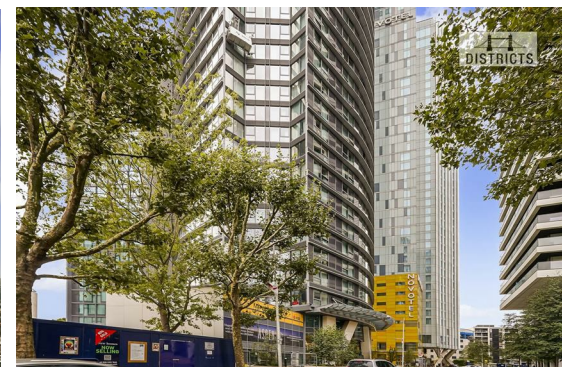
On-site amenities include a state-of-the-art gymnasium, 24-hr Concierge, Sky Lounge, Wellness Suite, Indoor & Outdoor Play Area, Games Room, Dining room, Vitality pool and Cinema.

Aspen Tower benefits from excellent transport links with Canary Wharf (Jubilee line)(Elizabeth line), South Quay (DLR) and Heron Quays (DLR) and The Thames Clipper. Photos are of a similar apartment.



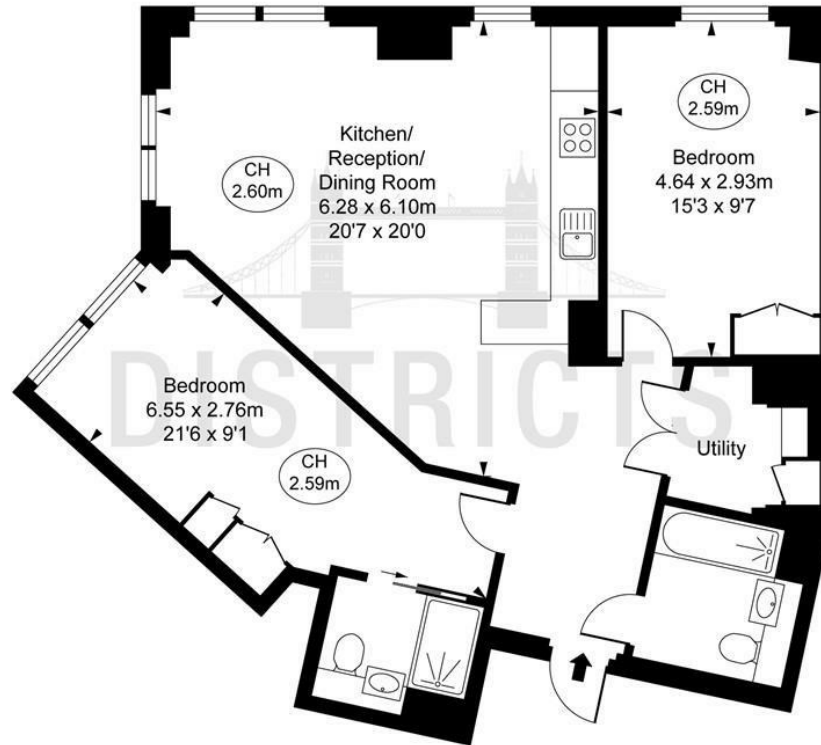
- Electricity supply – Mains | Water supply – Mains | Sewerage – Mains | Heating – Mains, Underfloor
- To check broadband and mobile phone coverage please visit Ofcom.
- EPC Rating: New Build
- Council Tax Band: New Build, Tower Hamlets
- Change of contract fee: £50 including VAT
- Lift access | Cladding: EWS1 Certificate available
- Holding Deposit: £865 (1 weeks rent, subject to agreed offer)
- Deposit Amount: £4,326





Aspen Tower, E22  
Approximate Gross Internal Area  
79.65 sq m / 857 sq ft

( CH = Ceiling Heights )



This plan is not to scale. It is for guidance and not for valuation purposes.  
All measurements and areas are approximate only, and have been prepared in accordance with the current edition of the RICS Code of Measuring Practice.  
© Fulham Performance

These particulars, whilst believed to be accurate are set out as a general outline only for guidance and do not constitute any part of an offer or contract. Intending purchasers should not rely on them as statements of representation of fact, but must satisfy themselves by inspection or otherwise as to their accuracy. No person in this firm's employment has the authority to make or give any representation or warranty in respect of the property.